
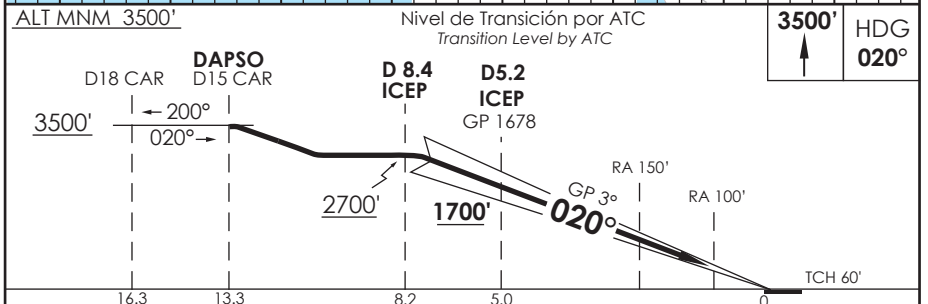
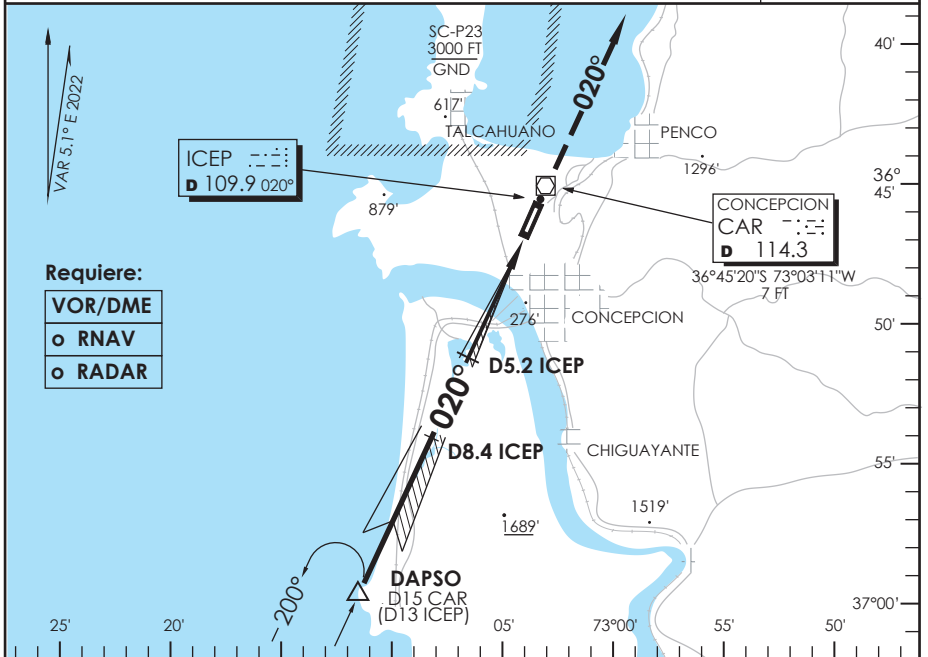


AD. CARRIEL SUR (INTL O/R)
CONCEPCION - CHILE

SCIE IAC 3
ILS X Rwy 02 (SA CAT I y SA CAT II)

CONCEPCION RADAR Concepción RADAR		125.8/129.35	TORRE CONCEPCION Concepción Tower		118.6	CONTROL TERRESTRE Ground Control		121.9
LOC ICEP 109.9	FINAL APCH CRS 020°	MNM ALT D5.2 ICEP 1700'	CAT I SA / II SA De acuerdo a CAT According to CAT		AD Elev. THR 02 Elev.	26' 26'		 4300 FT MSA 25 NM CAR
APCH FRUSTRADA: Ascenso 3500' HDG 020°, luego según autorización ATC. Missed APCH: Climb to 3500' on HDG 020°, then according to ATC clearance.								



C A T E G O R I A	DIRECTO RWY 02 <i>Straight in RWY 02</i> ***				*OPS LGT reducida RQR aprobación en OPSPEC, MSPEC o LOA para realizar ILS CAT II o III al menos hasta la DH publicada. **OPS LGT reducida RQR aprobación en OPSPEC, MSPEC o LOA para realizar ILS CAT III al menos hasta la DH publicada. VER ALS permitidos en DAN 11 14
	ILS SA CAT II ** RA 100' DA 126' (100')		ILS SA CAT I * RA 150' DA 176' (150')		
A	ALS	WO ALS	ALS	WO ALS	
B	RVR 350m	NA	RVR 450m	NA	
C					
D					


Se requiere certificación de ACFT y Habilitación de Tripulación Especial (DAN 11 14)
Special Aircraft and Aircrew certification required (DAN 11 14)

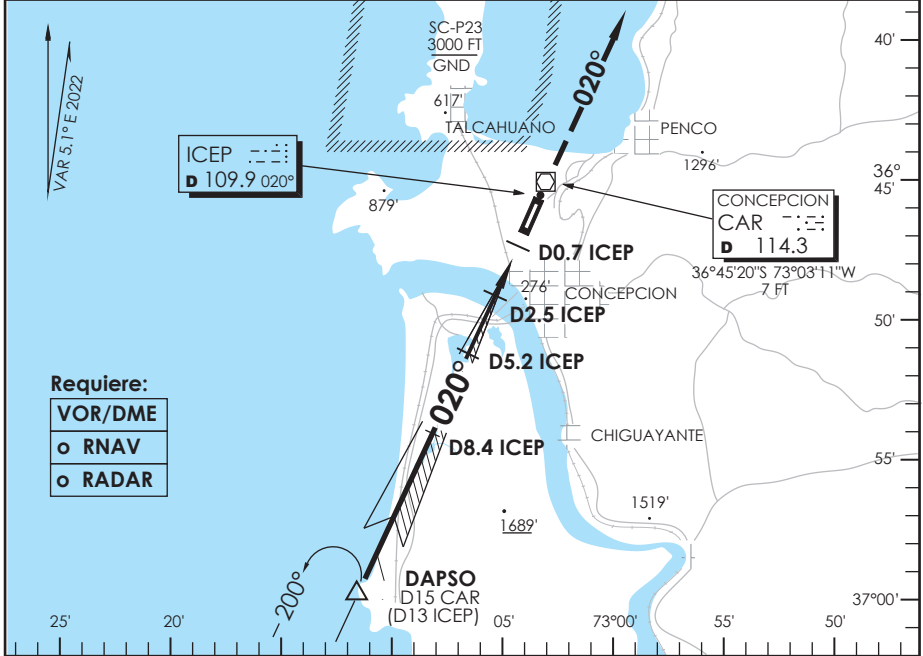
Veloc. Terrestre Kts	80	100	120	140	160	*** PROC NA WO ICEP DME
GP 3°	425'	531'	637'	743'	849'	

DASA / SECCION ASES-MAP

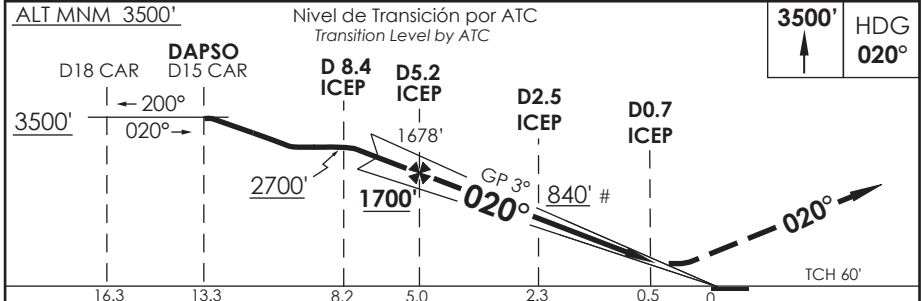
AD. CARRIEL SUR (INTL O/R) CONCEPCION - CHILE

SCIE IAC 4 ILS W o LOC W RWY 02

CONCEPCION RADAR Concepción RADAR		125.8/129.35	TORRE CONCEPCION Concepción Tower		118.6	CONTROL TERRESTRE Ground Control		121.9	
LOC ICEP	FINAL APCH CRS	MNM ALT D5.2 ICEP	ILS DA (H)	AD Elev.	26'				
109.9	020°	1700'	226'(200')	THR 02 Elev.	26'				
APCH FRUSTRADA: Ascenso 3500' HDG 020°, luego según autorización ATC.									
Missed APCH: Climb to 3500' on HDG 020°, then according to ATC clearance.									



- Require:**
- VOR/DME
 - o RNAV
 - o RADAR



PROCEDIMIENTO	DIRECTO RWY 02 Straight in RWY 02 **					CIRCULANDO OESTE Circling West	ALTN Alternate Minimums	
	ILS DA 226' (200')			LOC MDA 360' (334')				
	ALSF-2		WO ALSF-2	ALSF-2	WO ALSF-2	1.6 Km 640' (614') 2.8 Km 3.2 Km	VER PAG. GEN 2.19	
	TDZL y RCLL	WO TDZL o RCLL						
A	RVR 550m*	1.2 Km	0.8 Km	1.6 Km				
B	RVR 550m							
C	0.8 Km							
D	RVR 750m							
		0.8 Km						
* Ver página GEN 2.11 / See page GEN 2.11					** WO ICEP DME PROC NA PROCEDURE NOT AUTHORIZED WITHOUT ICEP DME			
Veloc. Terrestre Kts	80	100	120	140	160	# Solo LOC		
GP 3°	425'	531'	637'	743'	849'	# LOC only		
FAF to MAPt 4.4 NM	3:18	2:38	2:12	1:53	1:39			

CAMBIO: NR IAC / ID PROC
CHANGE: IAC NR / PROC ID

AMDT 103

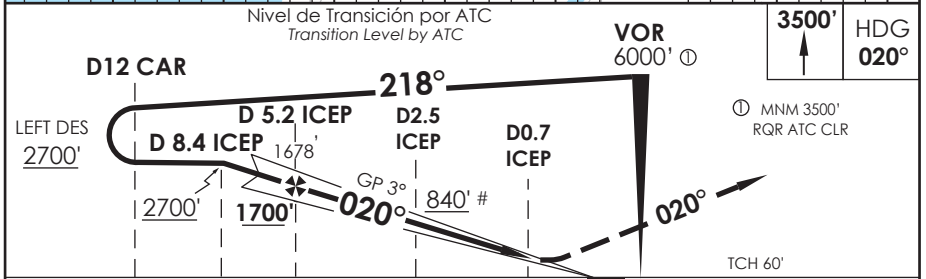
06 AGOSTO 2026

DASA / SECCION A45-MAP

AD. CARRIEL SUR (INTL O/R) CONCEPCION - CHILE

SCIE IAC 5
ILS U o LOC U RWY 02

CONCEPCION RADAR Concepción RADAR		125.8/129.35	TORRE CONCEPCION Concepción Tower		118.6	CONTROL TERRESTRE Ground Control		121.9
LOC ICEP 109.9	FINAL APCH CRS 020°	MNM ALT D5.2 ICEP 1700'	ILS DA (H) 226' (200')		AD Elev. 26'	THR 02 Elev. 26'		<div style="border: 1px solid black; border-radius: 50%; width: 60px; height: 60px; display: flex; align-items: center; justify-content: center; margin: 0 auto;">4300 FT</div> <p>MSA 25 NM CAR</p>
<p>APCH FRUSTRADA: Ascenso 3500' HDG 020°, luego según autorización ATC. Missed APCH: Climb to 3500' on HDG 020°, then according to ATC clearance.</p>								



C A T E G O R Í A	DIRECTO RWY 02 <i>Straight in RWY 02</i> **					CIRCULANDO OESTE Circling West	ALTN Alternate Minimums
	ILS DA 226' (200')			LOC MDA 360' (334')			
	ALSIF-2		WO ALSIF-2	ALSIF-2		640' (614')	VER PAG. GEN 2.19
	TDZL y RCLL	WO TDZL o RCLL		ALSIF-2	WO ALSIF-2		
A	RVR 550m	RVR 550m*	1.2 Km	0.8 Km	1.6 Km	560' (534')	
B	0.8 Km	RVR 750m				1.6 Km	
C		0.8 Km				3.2 Km	
D							
* Ver pagina GEN 2.11 / See page GEN 2.11					** WO ICEP DME PROC NA PROCEDURE NOT AUTHORIZED WITHOUT ICEP DME		
Veloc. Terrestre Kts	80	100	120	140	160	# Solo LOC	
GP 3° FPM	425'	531'	637'	743'	849'	# LOC only	
(FAF TO MAP ± 4.4)	3:18	2:38	2:12	1:53	1:39		

CAMBIO: NR IAC / ID PROC
CHANGE: IAC NR / PROC ID

AMDT 103

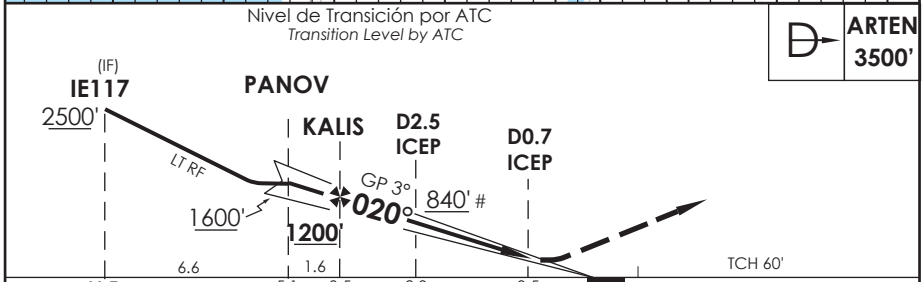
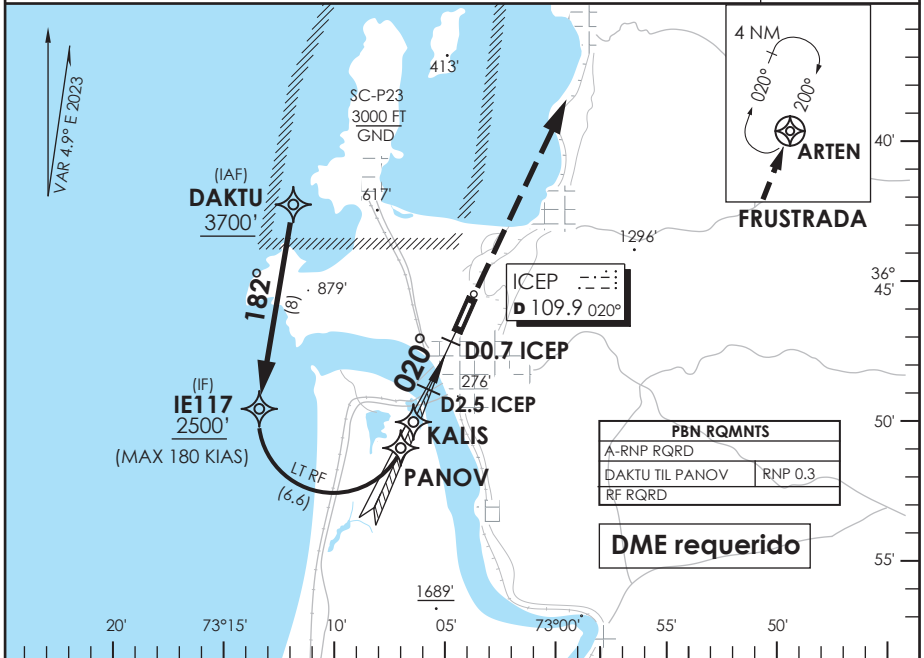
06 AGOSTO 2026

DASA / SECCION IAS-MAP

AD. CARRIEL SUR (INTL O/R)
CONCEPCION - CHILE

SCIE IAC 6
ILS T o LOC T RWY 02

CONCEPCION RADAR Concepción RADAR		225.8/129.35		TORRE CONCEPCION Concepción Tower		118.6		CONTROL TERRESTRE Ground Control		121.9	
LOC ICEP 109.9	FINAL APCH CRS 020°	MNM ALT KALIS 1200'	ILS DA (H) 226' (200')	AD Elev. 26'		THR 02 Elev. 26'		<div style="border: 1px solid black; border-radius: 50%; width: 100px; height: 100px; display: flex; align-items: center; justify-content: center;"> 4300 FT </div> MSA 25 NM CAR			
APCH FRUSTRADA: Ascenso directo ARTEN 3500', ingrese HLDG 200° derecha o según autorización ATC. Missed Apch: Climb direct to ARTEN 3500' enter on HLDG 200° right or according to ATC Clearance.											



C A T E G O R I A	DIRECTO RWY 02 <i>Straight in RWY 02</i> **					CIRCULANDO OESTE Circling West	ALTN Alternate Minimums
	ILS DA 226' (200')						
	ALSF-2		LOC WO GP MDA 360' (334')				
	TDZL y RCLL	WO TDZL o RCLL	WO ALSF-2	ALSF-2	WO ALSF-2		
A	RVR 550m	RVR 550m*			560' (534')	1.6 Km 2.8 Km 3.2 Km	VER PAG. GEN 2.19
B	0.8 Km	RVR 750m	1.2 Km	0.8 Km	640' (614')		
C		0.8 Km		1.6 Km			
D							
* Ver pagina GEN 2.11 / See page GEN 2.11			** WO ICEP DME PROC NA PROCEDURE NOT AUTHORIZED WITHOUT ICEP DME				
Veloc. Terrestre Kts	80	100	120	140	160	# Solo LOC	
GP 3° FPM	425'	531'	637'	743'	849'	# LOC only	

CAMBIO: NR IAC
 Change: IAC NR


DGAC AMDT 103

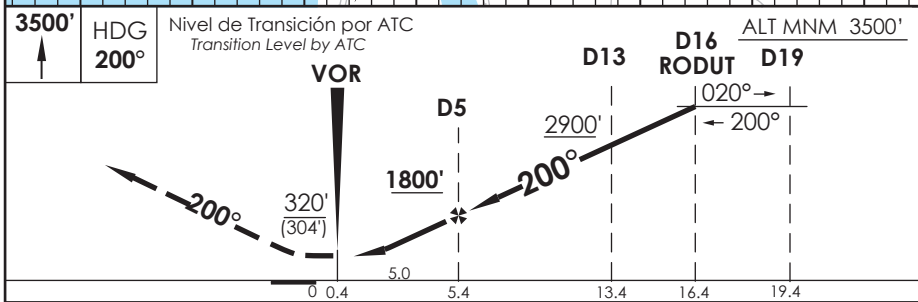
06 AGOSTO 2026

DASA / SECCION IAS-MAP

AD. CARRIEL SUR (INTL O/R) CONCEPCION - CHILE

SCIE IAC 7
VOR Z RWY 20

CONCEPCION RADAR Concepción RADAR		125.8/129.35	TORRE CONCEPCION Concepción Tower		118.6	CONTROL TERRESTRE Ground Control		121.9
VOR CAR 114.3	FINAL APCH CRS 200°	MNM ALT D5 1800'	MDA (H) 320' (304')		AD Elev. THR 20 Elev.	26' 16'		
APCH FRUSTRADA: Ascenso 3500' HDG 200° dentro de D15 según autorización ATC. Missed Apch: Climb to 3500' on HDG 200° within D15 according to ATC clearance.								




CATEGORÍA	DIRECTO RWY 20 <i>Straight in RWY 20</i>		CIRCULANDO OESTE <i>Circling West</i>	ALTN <i>Alternate Minimums</i>
	MDA 320' (304')			
	A	1.6 Km	560' (534')	VER PAG. GEN 2.19
	B		640' (614')	
C				
D				

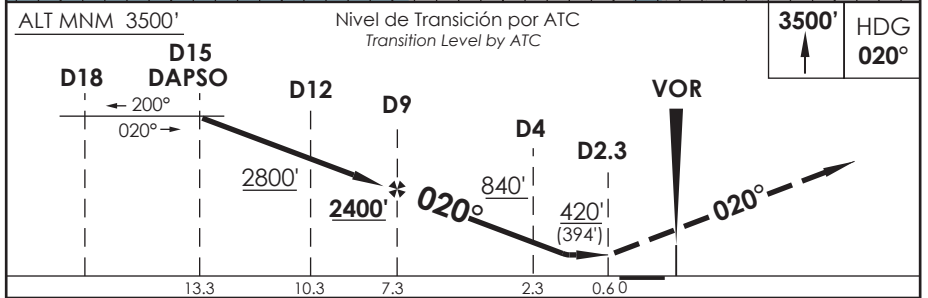
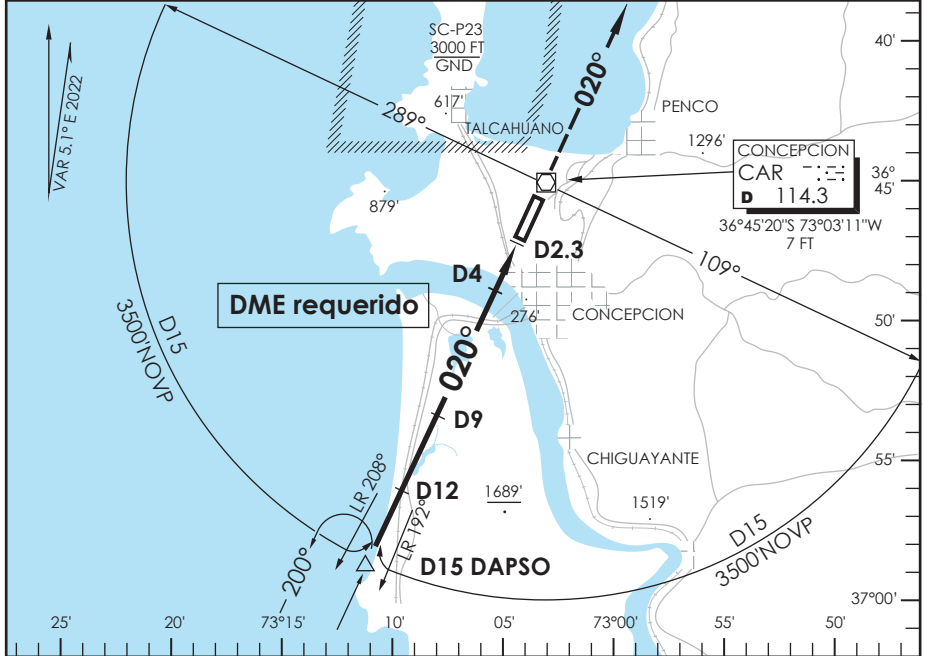
Veloc. Terrestre Kts	80	100	120	140	160
Angulo DES 3° FPM	425'	531'	637'	743'	849'
FAF to MAP 5.0 NM	3:45	3:00	2:30	2:08	1:52

DASA / SECCION IAS-MAP

AD CARRIEL SUR (INTL O/R) CONCEPCION - CHILE

SCIE IAC 8
VOR RWY 02

CONCEPCION RADAR Concepción RADAR		125.8/129.35	TORRE CONCEPCION Concepción Tower		118.6	CONTROL TERRESTRE Ground Control		121.9
VOR CAR 114.3	FINAL APCH CRS 020°	MNM ALT D9 2400'	MDA (H) 420' (394')		AD Elev. THR 02 Elev.	26' 26'		 4300 FT MSA 25 NM CAR
APCH FRUSTRADA: Ascenso 3500' HDG 020° dentro de D15 según autorización ATC. Missed Apch: Climb to 3500' on HDG 020° within D15 according to ATC clearance.								



CATEGORIA	DIRECTO RWY 02 Straight in RWY 02		CIRCULANDO OESTE Circling West	ALTN Alternate Minimums		
	MDA 420' (394')					
A	1.2 Km	1.6 Km	560' (534)	VER PAG. GEN 2.19		
B			2.8 Km			
C					3.2 Km	
D						2.0 Km
Veloc. Terrestre Kts		80	100	120	140	160
Angulo DES 3° FPM		425'	531'	637'	743'	849'
FAF to MAP 6.7 NM		5:02	4:01	3:21	2:52	2:31

CAMBIO: NR IAC / FPM
CHANGE: IAC NR / FPM

AMDT 103

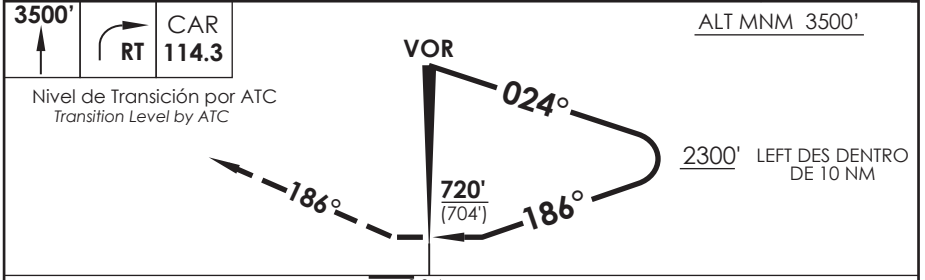
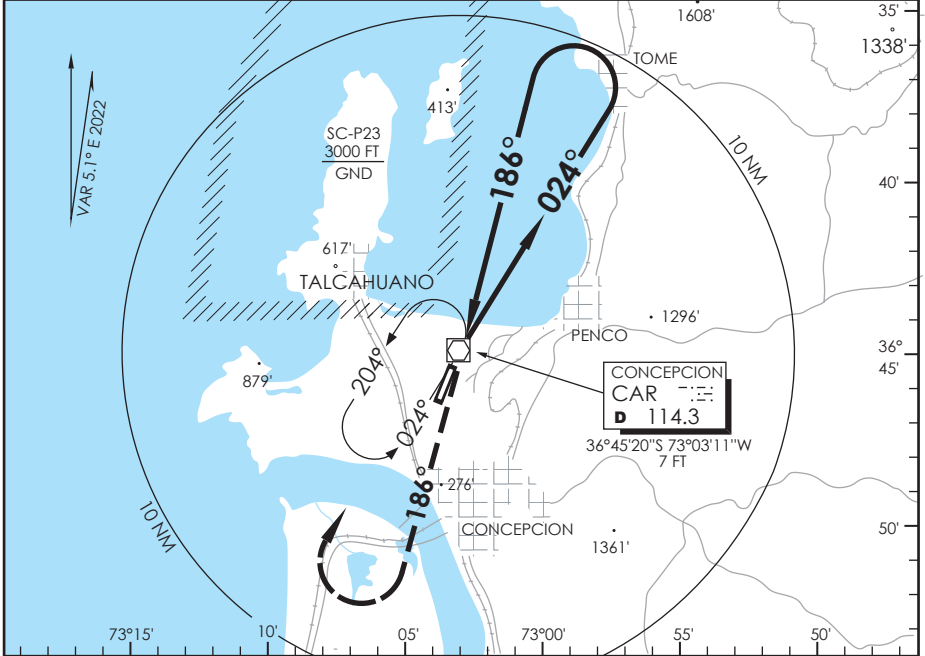
06 AGOSTO 2026

DASA / SECCION AIS-MAP

AD. CARRIEL SUR (INTL O/R) CONCEPCION - CHILE

SCIE IAC 9
VOR Y RWY 20

CONCEPCION RADAR Concepción RADAR		125.8/129.35	TORRE CONCEPCION Concepción Tower		118.6	CONTROL TERRESTRE Ground Control		121.9
VOR CAR 114.3	FINAL APCH CRS 186°	WO FAF		MDA (H) 720' (704')	AD Elev. THR 20 Elev.	26' 16'		 4300 FT MSA 25 NM CAR
APCH FRUSTRADA: Ascenso 3500' HDG 186°, viraje derecha directo CAR VOR, ingrese a HLDG 024° izquierdo. Missed Apch: Climb to 3500' on HDG 186°, right turn direct to CAR VOR, enter on HLDG 024° left.								



CATEGORIA	DIRECTO RWY 20 <i>Straight in RWY 20</i> *		CIRCULANDO OESTE <i>Circling West</i>		ALTN <i>Alternate Minimums</i>
	MDA 720' (704')				
A	1.6 Km		720' (694')	1.6 Km	VER PAG. GEN 2.19
B				3.2 Km	
C	3.2 Km			3.6 Km	
D	3.6 Km				

* Desalineado 14° respecto a RCL / Offset 14° from RWY center line

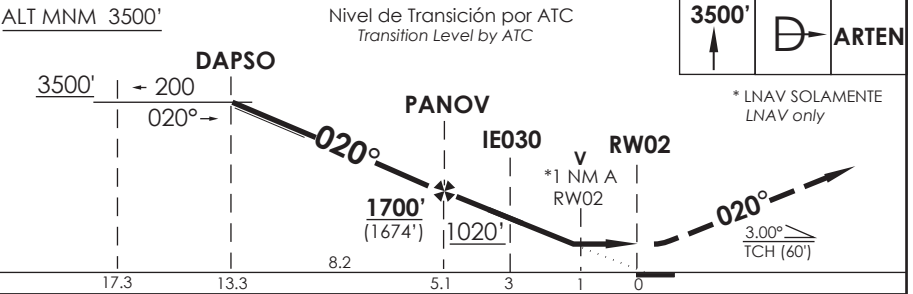
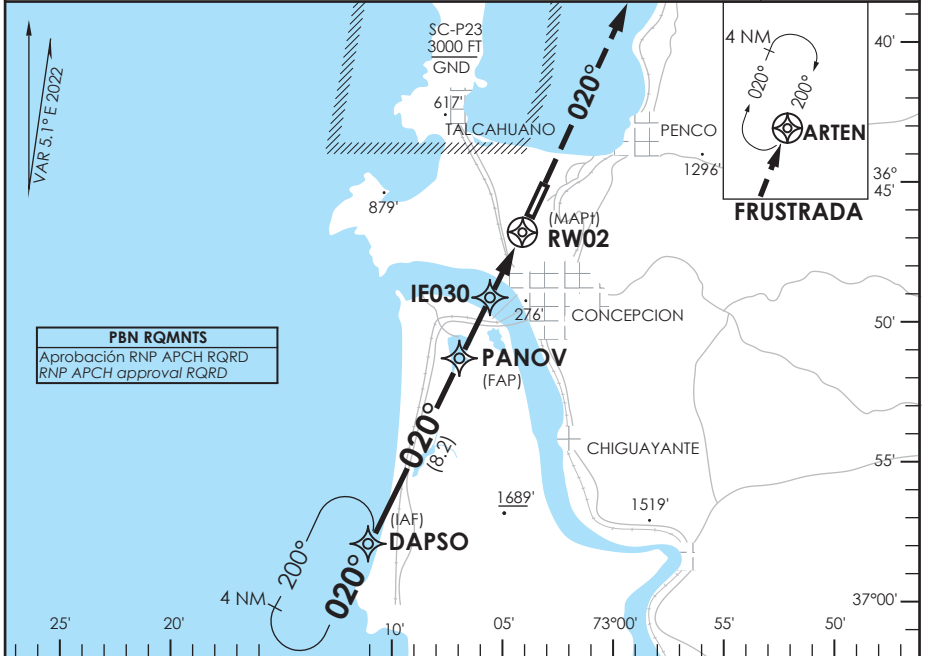
AD. CARRIEL SUR (INTL O/R)
CONCEPCION - CHILE

SCIE IAC 10
RNP Y RWY 02

CONCEPCION RADAR Concepción RADAR		125.8/129.35	TORRE CONCEPCION Concepción Tower		118.6	CONTROL TERRESTRE Ground Control		121.9
RNP	FINAL APCH CRS 020°	MNM ALT PANOV 1700' (1674')	LNAV/VNAV DA(H) 330' (304')	AD Elev. 26'	THR 02 Elev. 26'	 4300 FT MSA 25 NM RWY02		

APCH FRUSTRADA: Ascenso 3500' directo ARTEN, ingrese HLDG 200° derecha o según autorización ATC.

Missed Apch: Climb to 3500' direct to ARTEN, enter on HLDG 200° right or according to ATC clearance.



C A T E G O R Í A	DIRECTO RWY 02 <i>Straight in RWY 02</i>				CIRCULANDO OESTE Circling West	ALTN Alternate Minimums
	LNAV/VNAV DA 330' (304')		LNAV MDA 400' (374')			
	ALSF-2	WO ALSF-2	ALSF-2	WO ALSF-2	560' (534') 1.6 Km 640' (614') 2.8 Km 3.2 Km	VER PAG. GEN 2.19
	A			1.6 Km		
B	1.2 Km	1.6 Km	1.2 Km	2.0 Km		
C						
D						

Para sistemas BARO-VNAV no compensados PROC
 BARO-VNAV NA BLW -10°C ó ABV 47°C

Veloc. Terrestre Kts	80	100	120	140	160
Angulo DES 3,0° FPM	425'	531'	637'	743'	849'
MAPt en RW02					

CAMBIO: NR IAC
 CHANGE: IAC NR

AMDT 103

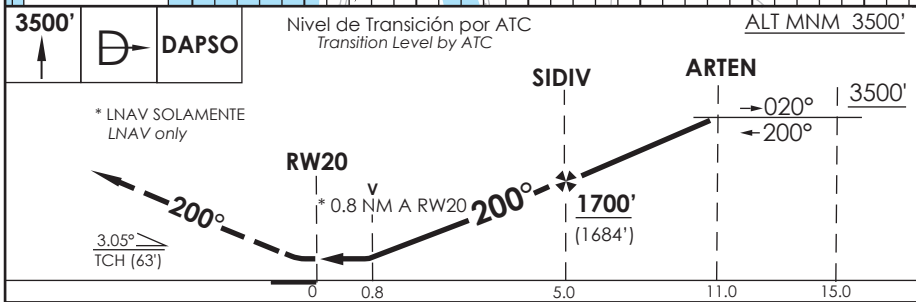
06 AGOSTO 2026

DASA / SECCION IAS-MAP

AD. CARRIEL SUR (INTL O/R) CONCEPCION - CHILE

SCIE IAC 11
RNP RWY 20

CONCEPCION RADAR Concepción RADAR		125.8/129.35	TORRE CONCEPCION Concepción Tower		118.6	CONTROL TERRESTRE Ground Control		121.9
RNP	FINAL APCH CRS 200°	MNM ALT SIDIV 1700'	LNAV/VNAV DA(H) 270'(254')	AD Elev. 26'	THR 20 Elev. 16'	 4300 FT MSA 25 NM RWY20		
APCH FRUSTRADA: Ascenso 3500' directo DAPSO, ingrese HLDG 020° izquierda o según autorización ATC. Missed Apch: Climb to 3500' direct to DAPSO, enter on HLDG 020° left or according to ATC clearance.								



C A T E G O R I A	DIRECTO RWY 20 <i>Straight in RWY 20</i>		CIRCULANDO OESTE Circling West	ALTN Alternate Minimums
	LNAV/VNAV DA 270' (254')	LNAV MDA 320' (304')		
A	1.6 Km	1.6 Km	560'(534')	VER PAG. GEN 2.19
B			640'	
C			2.8 Km	
D			3.2 Km	

Para sistemas BARO-VNAV no compensados PROC
BARO-VNAV NA BLW -10°C ó ABV 47°C

Veloc. Terrestre Kts	80	100	120	140	160
Angulo DES 3.05° FPM	432'	540'	648'	755'	863'
MAPt en RW20					

DASA / SECCION IAS-MAP

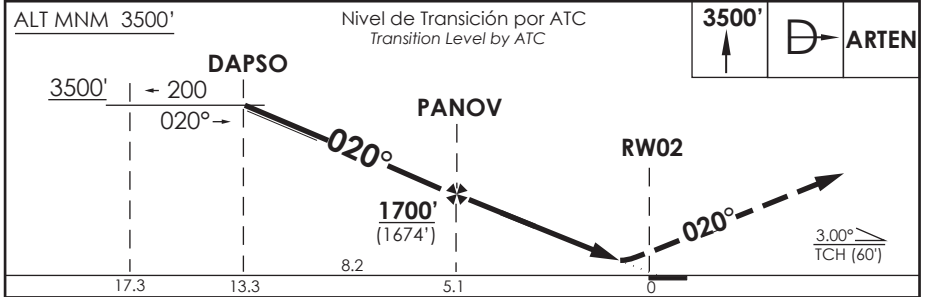
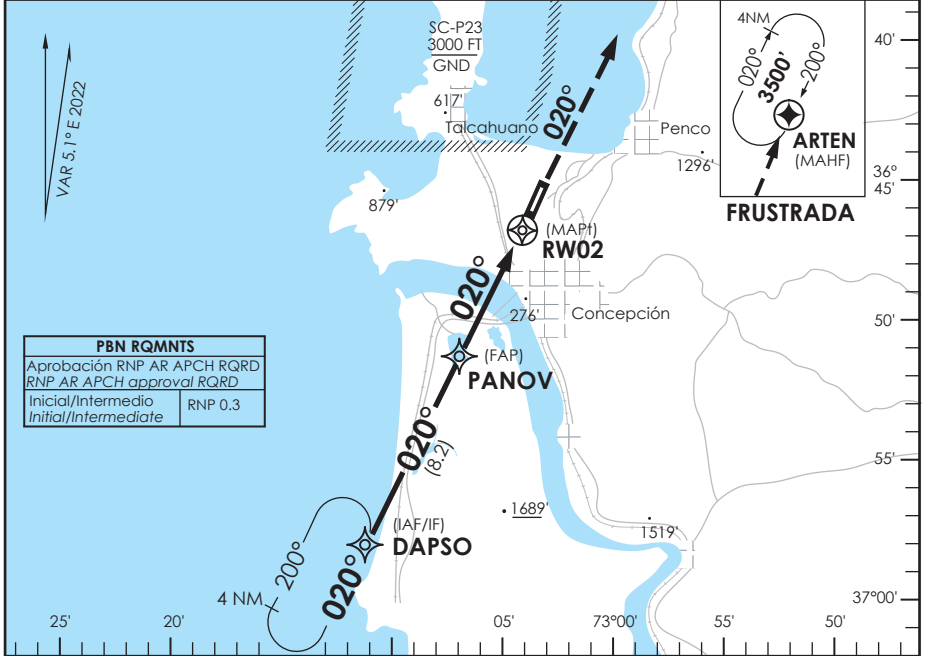
AD. CARRIEL SUR (INTL O/R)
CONCEPCION - CHILE

SCIE IAC 12
RNP Z RWY 02 (AR)

CONCEPCION RADAR Concepción RADAR	125.8/129.35	TORRE CONCEPCION Concepción Tower	118.6	CONTROL TERRESTRE Ground Control	121.9
RNP	FINAL APCH CRS 020°	MNM ALT PANOV 1700'	DA(H) 280'(254')	AD Elev. THR 02 Elev.	26' 26'

APCH FRUSTRADA: Ascenso 3500' directo ARTEN, ingrese HLDG 200° derecha o según autorización ATC.
 Missed Apch: Climb to 3500' direct to ARTEN, enter on HLDG 200° right or according to ATC clearance.

4300 FT
MSA 25 NM RW02



A	DIRECTO RWY 02 Straight in RWY 02		RNP AR RWY 02 SCIE: Para sistemas BARO-VNAV no compensados PROC NA BLW 0°C ó ABV 47°C
	RNP 0.1 DA 280' (254')		
B	ALSF-2	WO ALSF-2	ALTN NA (RNP BLW 0.3)
C	0.8 Km	1.6 Km	
D			

Veloc. Terrestre Kts	80	100	120	140	160	REQUIERE AUTORIZACIÓN ESPECIAL PARA ACFT Y TRIPULACIÓN SPECIAL ACFT AND AIRCREW AUTHORIZATION RQRD
Angulo DES 3.0° FPM	425'	531'	637'	743'	849'	
MAPt en DA						

DASA / SECCION AS-MAP

CONCEPCION / AD CARRIEL SUR - SCIE IAC 6

PROCEDIMIENTOS DE APROXIMACIÓN RNP / RNP APPROACH PROCEDURES													
(Esta información complementa a las cartillas publicadas en la AIP Chile VOL II / This information complements the charts published in the AIP Chile VOL II)													
IAC 6 ILS T o LOC T RWY 02													
NR SERIE	TRANS ID	PATH TERM	PUNTO DE RECORRIDO (WPT)	FO	ARC CENTER	COURSE/TRACK °M/T	DIST (NM)	TURN	ALTITUD	REST VEL	VPA	TCH	NAV
10		IF	(IAF) DAKTU	-	-	-	-	-	3700 FT+	-	-	-	1
15		TF	(IF) IE117	-	-	182° (187,16)	7,98	-	2500 FT+	-180 KIAS	-	-	0,3
20		RF	PANOV	-	IE999	-	6,58	LT	1600 FT+	-	-	-	0,3
25		CF	(FAP) KALIS	-	-	020° (025,11)	1,6	-	1200 FT+	-	3,0°	-	ILS
26		CF	D2.5 ICEP	-	-	020° (025,11)	1,2	-	840 FT+	-	3,0°	-	ILS
30		CF	(MAPt) RW02	Y	-	020° (025,11)	2,3	-	86 FT+	-	3,0°	60 FT	ILS
40		DF	ARTEN	Y	-	-	-	-	3500 FT+	-	-	-	1
50		HM	(MAHF) ARTEN	-	-	200° (205,03)	4	RT	3500 FT+	-	-	-	1

CONCEPCION / AD CARRIEL SUR - SCIE IAC 10

PROCEDIMIENTOS DE APROXIMACIÓN RNP / RNP APPROACH PROCEDURES												
(Esta información complementa a las cartillas publicadas en la AIP Chile VOL II / This information complements the charts published in the AIP Chile VOL II)												
IAC 10 RNP Y RWY 02												
NR SERIE	TRANS ID	PATH TERM	PUNTO DE RECORRIDO (WPT)	FO	COURSE/TRACK °M/T	DIST (NM)	TURN	ALTITUD	REST VEL	VPA	TCH	NAV
10		IF	(IAF/IF) DAPSO	-	-	-	-	3500 FT+	-	-	-	1
20		TF	(FAP) PANOVA	-	020° (025,12)	8,15	-	1700 FT+	-	-	-	1
25		TF	(SDF) IE030	-	020° (025,11)	2,1	-	1020 FT+	-	3,0°	-	0,3
30		TF	(MAPt) RW02	Y	020° (025,10)	3,1	-	86 FT+	-	3,0°	60 FT	0,3
40		DF	(MAHF) ARTEN	Y	-	-	-	3500 FT+	-	-	-	1
50		HM	(MAHF) ARTEN	-	200° (205,03)	4	RT	3500 FT+	-	-	-	1

CONCEPCION / AD CARRIEL SUR - SCIE IAC 11

PROCEDIMIENTOS DE APROXIMACIÓN RNP / RNP APPROACH PROCEDURES												
(Esta información complementa a las cartillas publicadas en la AIP Chile VOL II / This information complements the charts published in the AIP Chile VOL II)												
IAC 11 RNP RWY 20												
NR SERIE	TRANS ID	PATH TERM	PUNTO DE RECORRIDO (WPT)	FO	COURSE/TRACK °M/T	DIST (NM)	TURN	ALTITUD	REST VEL	VPA	TCH	NAV
10		IF	(IAF/IF) ARTEN	-	-	-	-	3500 FT+	-	-	-	1
20		TF	(FAP) SIDIV	-	200° (205,03)	5,87	-	1700 FT+	-	-	-	1
30		TF	(MAPt) RW20	Y	200° (205,05)	4,97	-	79 FT+	-	3,05°	63 FT	0,3
40		DF	(MAHF) DAPSO	Y	-	-	-	3500 FT+	-	-	-	1
50		HM	(MAHF) DAPSO	-	020° (025,14)	4	LT	3500 FT+	-	-	-	1
10	DAMIP	IF	(IAF) DAMIP	-	-	-	-	3500 FT+	-	-	-	1
20	DAMIP	TF	(IAF/IF) ARTEN	-	290° (295,02)	6	-	3500 FT+	-	-	-	1
10	RODUT	IF	(IAF) RODUT	-	-	-	-	3500 FT+	-	-	-	1
20	RODUT	TF	(IAF/IF) ARTEN	-	200° (205,07)	5,52	-	3500 FT+	-	-	-	1

CONCEPCION / AD CARRIEL SUR - SCIE IAC 12

PROCEDIMIENTOS DE APROXIMACIÓN RNP / RNP APPROACH PROCEDURES												
(Esta información complementa a las cartillas publicadas en la AIP Chile VOL II / This information complements the charts published in the AIP Chile VOL II)												
IAC 12 RNP Z RWY 02 (AR)												
NR SERIE	TRANS ID	PATH TERM	PUNTO DE RECORRIDO (WPT)	FO	COURSE/TRACK °M/T	DIST (NM)	TURN	ALTITUD	REST VEL	VPA	TCH	NAV
10		IF	(IAF/IF) DAPSO	-	-	-	-	3500 FT+	-	-	-	1
20		TF	(FAP) PANOVA	-	020° (025,12)	8,15	-	1700 FT+	-	-	-	0,3
30		TF	(MAPt) RW02	Y	020° (025,10)	5,1	-	86 FT+	-	3,0°	60 FT	0,1
40		DF	(MAHF) ARTEN	Y	-	-	-	3500 FT+	-	-	-	1
50		HM	(MAHF) ARTEN	-	200° (205,03)	4	RT	3500 FT+	-	-	-	1